



enkhuizer watersport vereniging 'almere'

Sailing instructions

SPORTBOAT CUP

Open Dutch Championship

Yngling 2024

14 September – 15 September 2024

Enkhuizen the Netherlands



Organizing Authority:

Enkhuizer Watersport Vereniging 'Almere' (EWVA)

under the auspices of

the Royal Netherlands Watersport Association (RNWA)

EWVA
Compagnieshaven 3c
1601 ZA Enkhuizen The Netherlands

www.ewva.nl

1 RULES

Not applicable.

2 CHANGES TO SAILING INSTRUCTIONS

- 2.1 Sailing instructions are available on the website EWVA.nl
No hard copy versions will be available
- 2.2 Any change to the sailing instructions will be posted before 09.00 on the day it will take effect, except that any change to the schedule of races will be posted by 20.00 on the day before it will take effect.


3 COMMUNICATION

Not applicable.

4 CODE OF CONDUCT

- 4.1. [DP] Competitors and support persons shall comply with reasonable requests from race officials.

5 SIGNALS MADE ASHORE

- 5.1. Signals made ashore will be displayed at the terrace of the EWVA Clubhouse.
- 5.2. When flag AP  is displayed ashore, '1 minute' is replaced with 'not less than 45 minutes' in the race signal AP.
- 5.3. A black 1 or 2 on a yellow board: today's races will be started on Race Area 1.or 2

6 SCHELDULE OF RACES

See NoR 9

7 CLASS FLAGS AND STARTING SEQUENCE

- 7.1 The Yngling Open Dutch Championship 2024 will be sailed on the same course as the other classes in the SPORTBOAT CUP.
The starting sequence will be published on Friday 13 September 20:00.
- 7.2 In case the starting sequence is altered on the water, this shall be indicated by the second replacement flag and one sound signal.
- 7.3 Class flags:
- | | | | |
|---------|--------|---------|-------------|
| Max Fun | E flag | SB 20 | F flag |
| J 80 | D flag | Etchels | G flag |
| J 22 | R flag | Yngling | YELLOW flag |
| ORC | O flag | | |

8 RACING AREAS

Addendum B of the SI. shows the location of the race areas.
This changes NOR Appendix B

9 COURSES

- 9.1. The diagram(s) in SI Addendum B show(s) the courses, the order in which marks are to be passed, and the side on which each mark is to be left.
- 9.2. No later than the warning signal, the starting vessel will display the approximate compass bearing of the first leg
- 9.3 The approximate distance from the midpoint of the starting line to mark 1 will be 0.8 – 1.5 Nm

10 MARKS

- 10.1 Marks will be orange inflatable cylinders.
- 10.2. ILM and Spreader will be an orange cylinder.
- 10.3. A race committee vessel signaling a change of a leg of the course is a mark as provided in SI 13.1.

11 OBSTRUCTIONS

Not applicable.

12 THE START

- 12.1 To alert boats that a race or sequence of races will begin soon, the orange starting line flag will be displayed with one sound at least five minutes before a warning signal is made.
- 12.2 The starting line will be between a mast displaying an orange flag on the race committee signal vessel at the starboard end and a staff displaying an orange flag at the port end.
- 12.3 A boat that does not start within 4 minutes after her starting signal will be scored Did Not Start without a hearing. This changes RRS A5.1 and A5.2.

13 CHANGE OF THE NEXT LEG OF THE COURSE

- 13.1 To change the next leg of the course, the race committee will move the original marks (or the finishing line) to a new position.

14 THE FINISH

- 14.1 The finishing line will be between a mast displaying a blue flag on the race committee signal vessel at the starboard end and a staff displaying a blue flag at the port end.

15 PENALTY SYSTEM

Not applicable.

16 TIME LIMITS AND TARGET TIMES

- 16.1 Time limits and target times are as follows:

Time limit	Min.
Mark 1 time limit	15
Target time	60
Finishing window	15

- 16.2 Boats failing to finish within the Finishing Window, and not subsequently retiring, penalized or given redress, will be scored Time Limit Expired (TLE) without a hearing. A boat scored TLE shall be scored points for the finishing place one more than the points scored by the last boat that finished within the Finishing Window. This changes RRS 35, A5.1, A5.2 and A10.
- 16.3 Failure to meet the target time will not be grounds for redress. This changes RRS 62.1(a).

17 HEARING REQUEST

- 17.1 The protest time limit is 60 minutes after the last boat has finished the last race of the day or the race committee signals no more racing today, whichever is later. The time limit will be posted on the official notice board.
- 17.2 Hearing request forms are available at the race office located at the regatta office. Protests and requests for redress or reopening shall be delivered there within the appropriate time limit.
- 17.3 Notices will be posted no later than 30 minutes after the protest time limit to inform competitors of hearings in which they are parties or named as witnesses. Hearings will be held in the jury room, located at the KNRM, next to the EWVA Clubhouse.

18 [NP][DP] SAFETY REGULATIONS

- 18.1 A boat that retires from a race shall notify the race committee as soon as possible.

19 REPLACEMENT OF CREW OR EQUIPMENT

- 19.1 Substitution of competitors will not be allowed without prior written approval of the race committee. Replacement of the responsible person is not allowed.

- 19.2. Substitution of marked damaged or lost equipment will not be allowed unless approved by the race committee. Requests for substitution shall be made to the committee at the first reasonable opportunity, which may be after the race.

20 EQUIPMENT CHECKS AND EVENT MEASUREMENT

- 20.1. A boat or equipment may be inspected at any time for compliance with the class rules, notice of race and sailing instructions.
- 20.2. [DP] When instructed by a race official on the water, a boat shall proceed to a designated area for inspection.

21 SUPPLIED BOATS

Not applicable.

22 OFFICAL VESSELS

Official vessels will be identified as follows: an EWVA flag

23 [DP] SUPPORT TEAMS

Team leaders, coaches and other support persons shall stay outside areas where boats are racing from the time of the preparatory signal for the first start until all boats have finished or retired or the race committee signals a postponement, general recall or abandonment.

24 TRASH DISPOSAL

Trash may be placed aboard official or support persons boats.

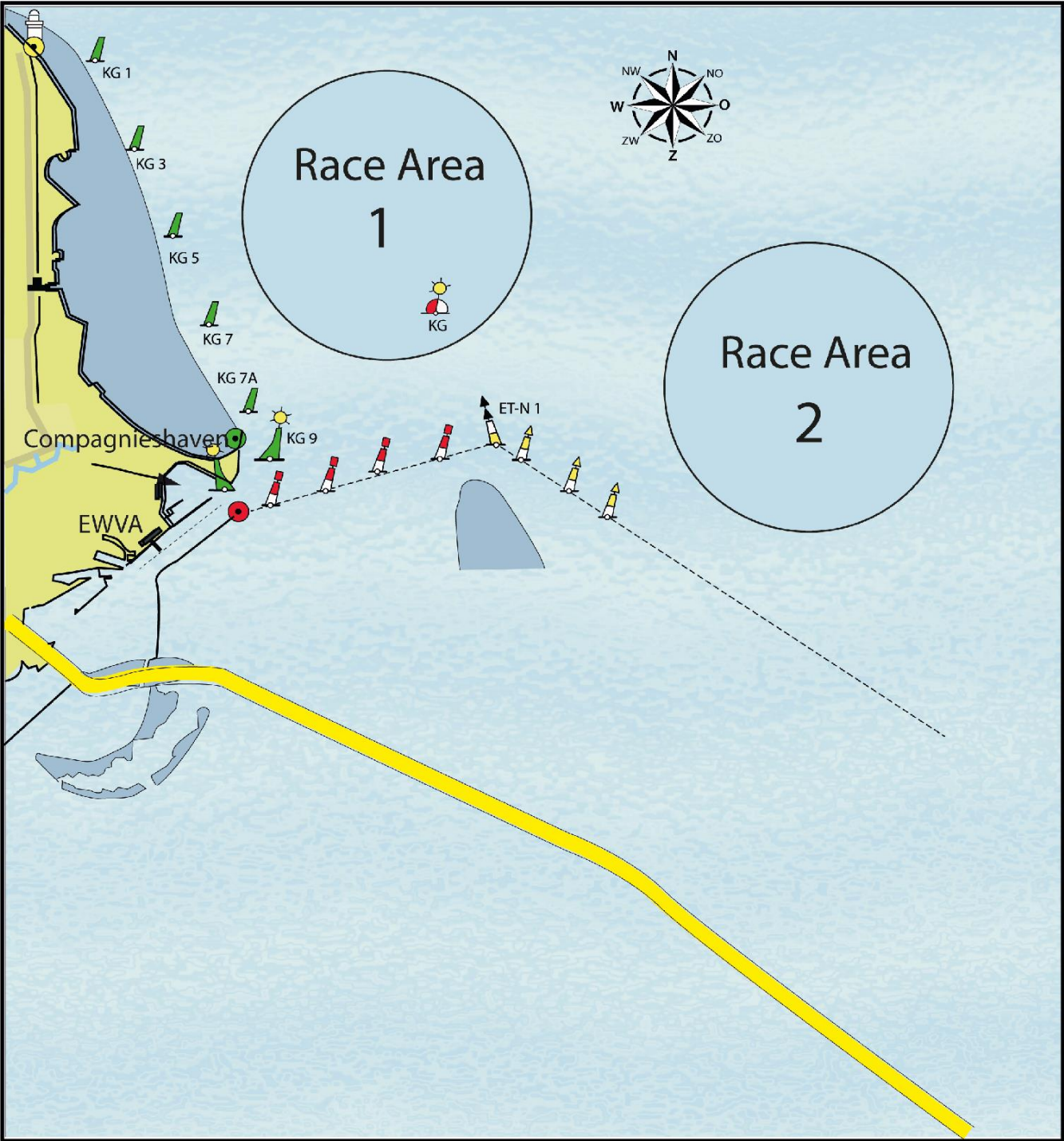
- 25 The chairman of the technical committee Yngling is Peter Spruit

Addendix A Event location

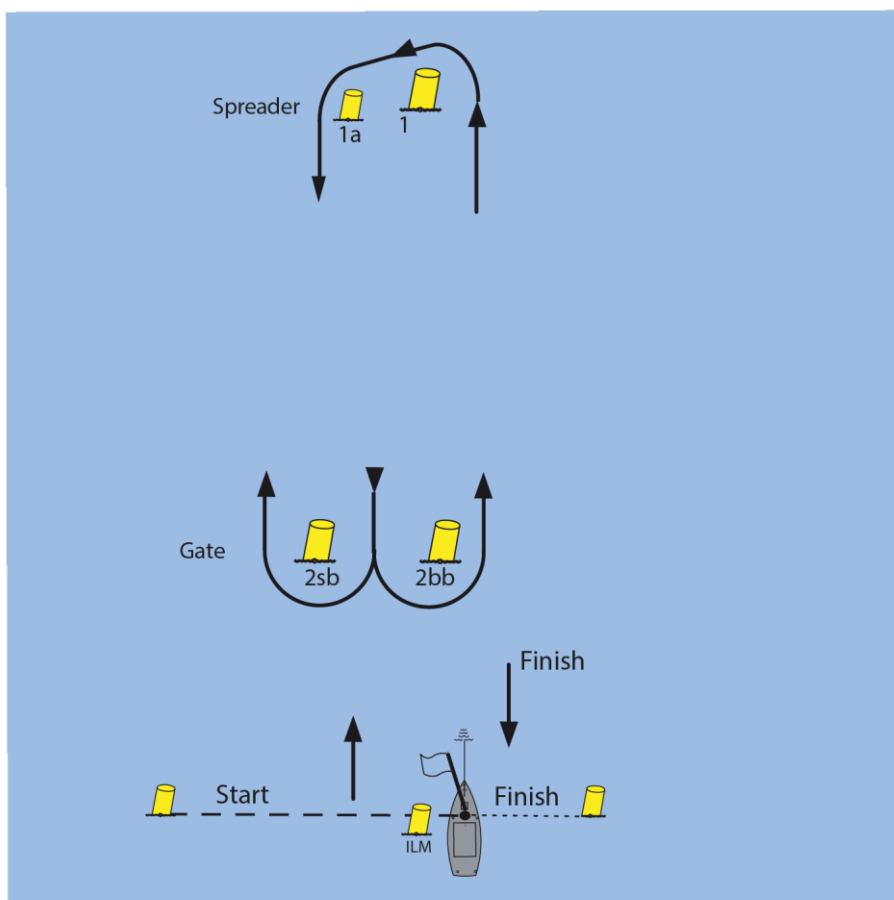


1. EWVA Clubhouse (Race Office, BBQ)
2. KNRM (Juryroom)
3. Crane
4. Slipway
5. Trailer parking
6. Harbourmaster / Toilet building
7. Minimarket
8. Joosten Yacht Supplies Shop

Addendix B Race Area



Addendix C The Courses



Course A Order of the Marks

- 1 Start – 1- 1a – Finish
- 2 Start – 1- 1a – 2bb/2sb – 1 - 1a – Finish
- 3 Start – 1- 1a – 2bb/2sb – 1 - 1a – 2bb/2sb – 1 - 1a – Finish
- 4 Start – 1- 1a – 2bb/2sb – 1 - 1a – 2bb/2sb – 1 - 1a – 2bb/2sb – 1 - 1a – Finish

C1 In the last leg to the finish Marks 2a/2b are not marks of the course.

C2 If the position of Mark 1 has been changed in accordance with RRS 33, then Mark 1a will no longer be a Mark during that race.

Appendix D Route to Compagnieshaven Enkhuizen

